



*A Partnership for the creation of a sustainable*  
**TALENT PIPELINE IN CONNECTICUT**

*Powered by* **CareerPath**

CONFIDENTIAL, copyright 2024, CareerPath Mobile LLC.  
[www.getcareerpath.com](http://www.getcareerpath.com) [hello@getcareerpath.com](mailto:hello@getcareerpath.com)

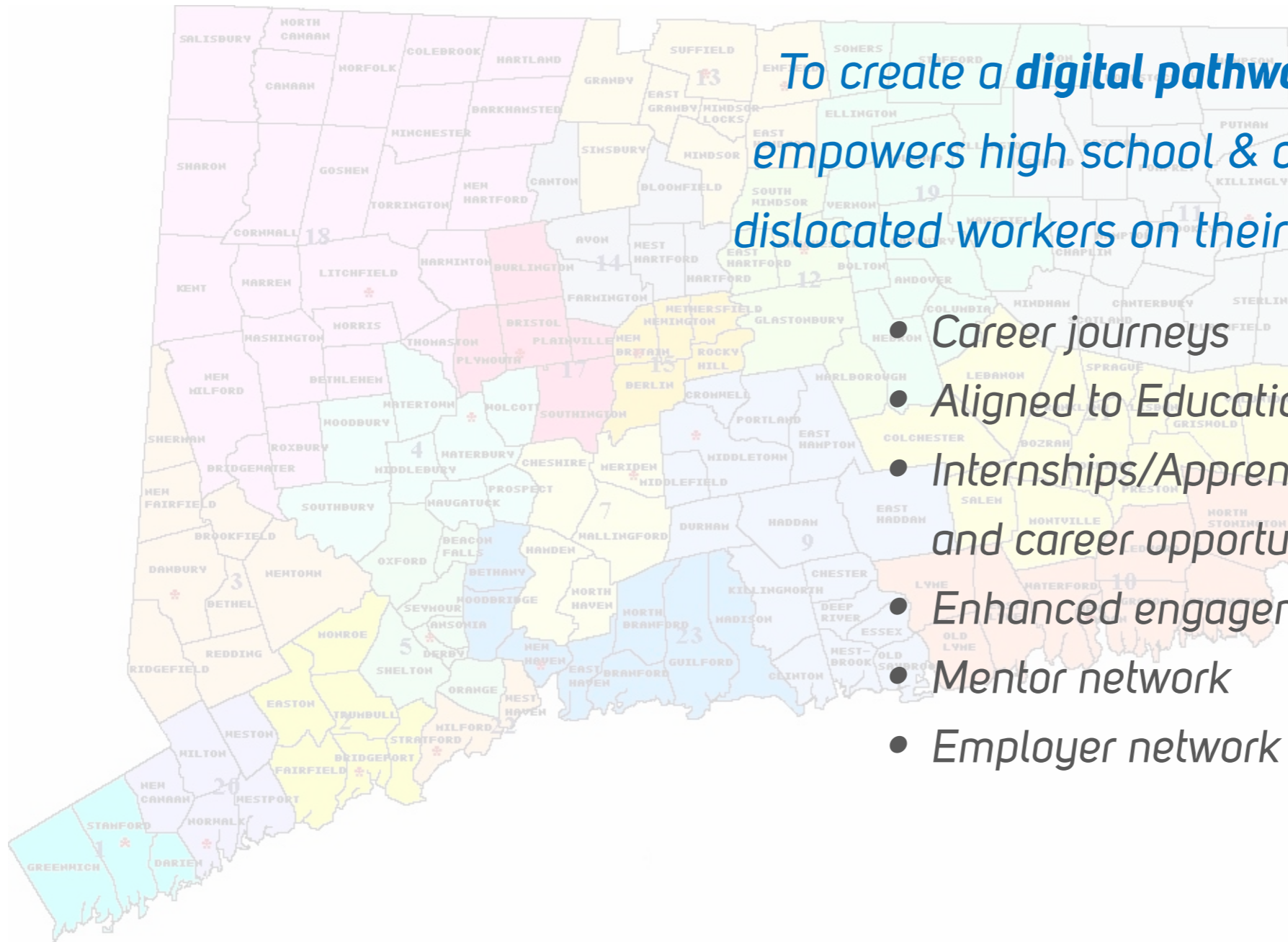
*Engage Empower Advance: Career Pathways takes shape here!*





To create a **digital pathways ecosystem** that empowers high school & college students and dislocated workers on their professional journey

- Career journeys
- Aligned to Education and CTE Standards
- Internships/Apprenticeships and career opportunities
- Enhanced engagement via gamification
- Mentor network
- Employer network





## Career Organizer, Communications and Recruitment Platform

- Leading edge approach and implementation
- Enables learners to discover and manage their path
- Allows for organization-specific content
- Serving all learners

## Personalized roadmaps to explore available dental opportunities

- Interactive user-interface similar to Google Maps™
- Interest profiler and skills assessment
- Local training opportunities integration

## Labor Market Data to help your community thrive

- Skill Fit matches over 30,000 skills found in job descriptions with job-seekers capabilities
- In-Depth Workforce Analytics





Engage Empower Advance: Career Pathways takes shape here!



## Journeys

Turn-by-turn directions paired with relevant industry information/data and skill gap analysis

Level	Occupation
Entry Level	Dental Assistant
Expert	Dental Hygienist
Leadership	Dental Lab Technician

# Alignment of Mission, Vision, Value & Purpose



*We are uniquely aligned in motivation, execution and outcomes*

*Guide all Learners towards Successful Careers*

*The regional resource for students  
and job seekers to go from learning to doing*

*Innovation  
Integrity  
People first  
Outcome driven*

*Ethical operations at the core of our organizations*

*Utilizing technology to overcome service gaps*



*Our Career Pathway Solution comes with powerful community features 'out of the box'*



**Proven Solutions** that consistently outperforms engagement expectations & drives ACTION!



State of Michigan Dept. of Labor



Governor's Office of  
Planning and Research



**40.33**

average time  
on system

- Dislocated worker program
- Skill & job training activities
- Aided participants with executive functioning & clear path to employment

CROSSWALKED  
**25,000**  
MOS CODES TO +/-  
**2,000**  
SOC CODES

*Cascade: Initiative to bolster California's defense supply chain cybersecurity resilience, and to help grow and sustain California's cybersecurity workforce*

**65%**

activities  
completed

- Jr. Year internship program
- Shattered expectations
- Expanded use to multiple programs targeting all class years

## *Planning for implementation*

*Launch, promote and maintain a dynamic pathway ecosystem*

*1. Engage & Empower Students & Job Seekers in Career Planning*

*2. Fully Aligned with CT Education and CTE Standards*

*3. Attain a Robust & Dynamic Employer Ecosystem*

*4. Provide Access to Pathways and Programs in Region and State*

*5. Optional integration of EMSI data with 30,000 Skills*

# Project Elements

Rapid integration coupled  
with a clear path to  
deployment



STAGE 1:  
*Launch*

**Prototype  
& Beta**

*Test and Prep Systems*

EDUCATION  
WORK

STAGE 2:  
*expand both*

**Full System  
Launch**

*Activate Revenue Stream*

STAGE 3:  
*grow platform*

**Reinvest &  
Add New  
Functions**

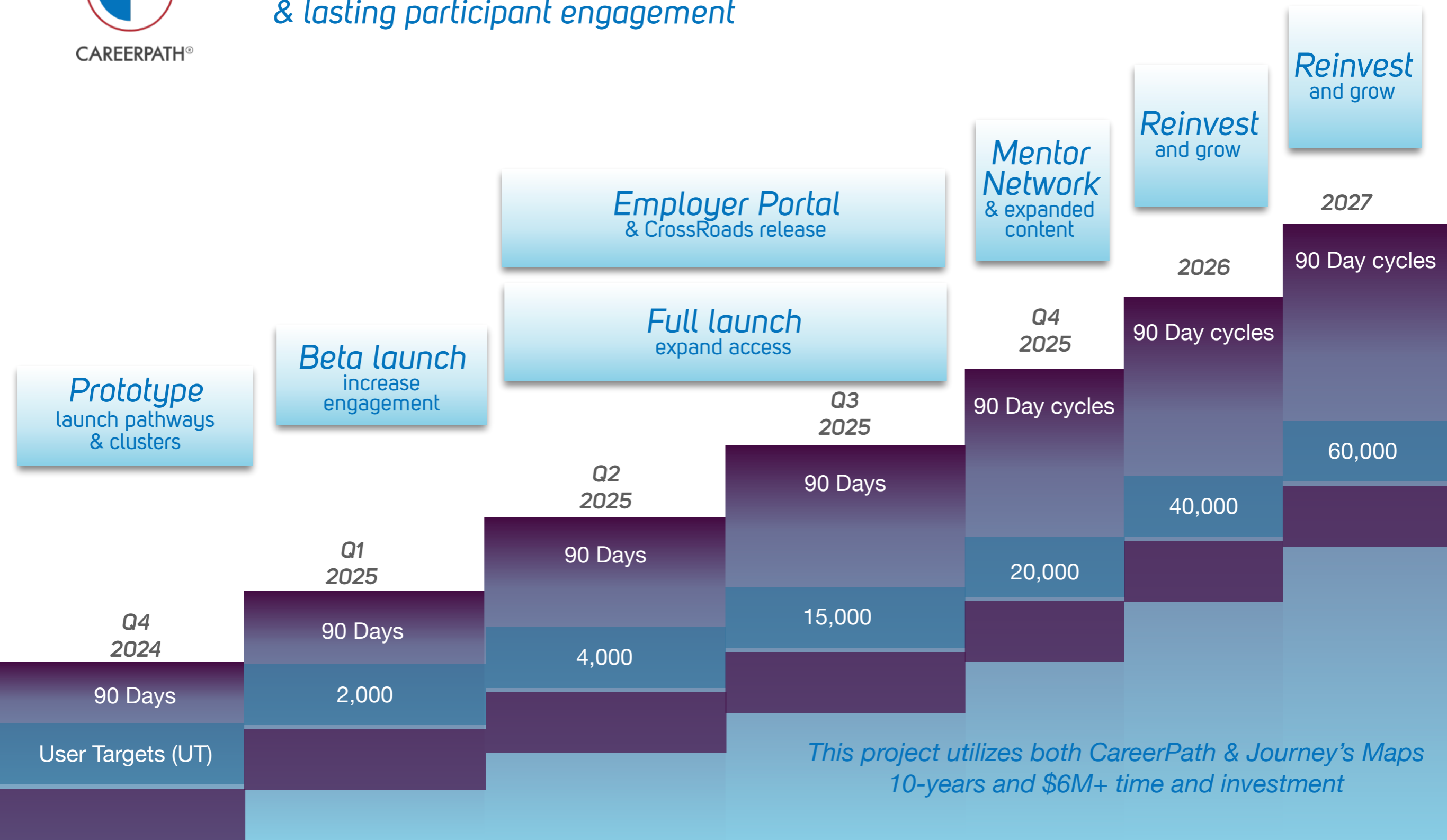
*Increasing Participation*



CAREERPATH®

Active system designed for durable & lasting participant engagement

# Project Timeline



Engage Empower Advance: Career Pathways takes shape here!



CAREERPATH®



## Sponsored

### Content Libraries (PBS Model)

- Schools
- Non-profits
- Publishers
- Corporations
- Foundations

**Students  
& Employees  
looking for  
advancement**

**ImBlaze**

EDUCATION  
WORK

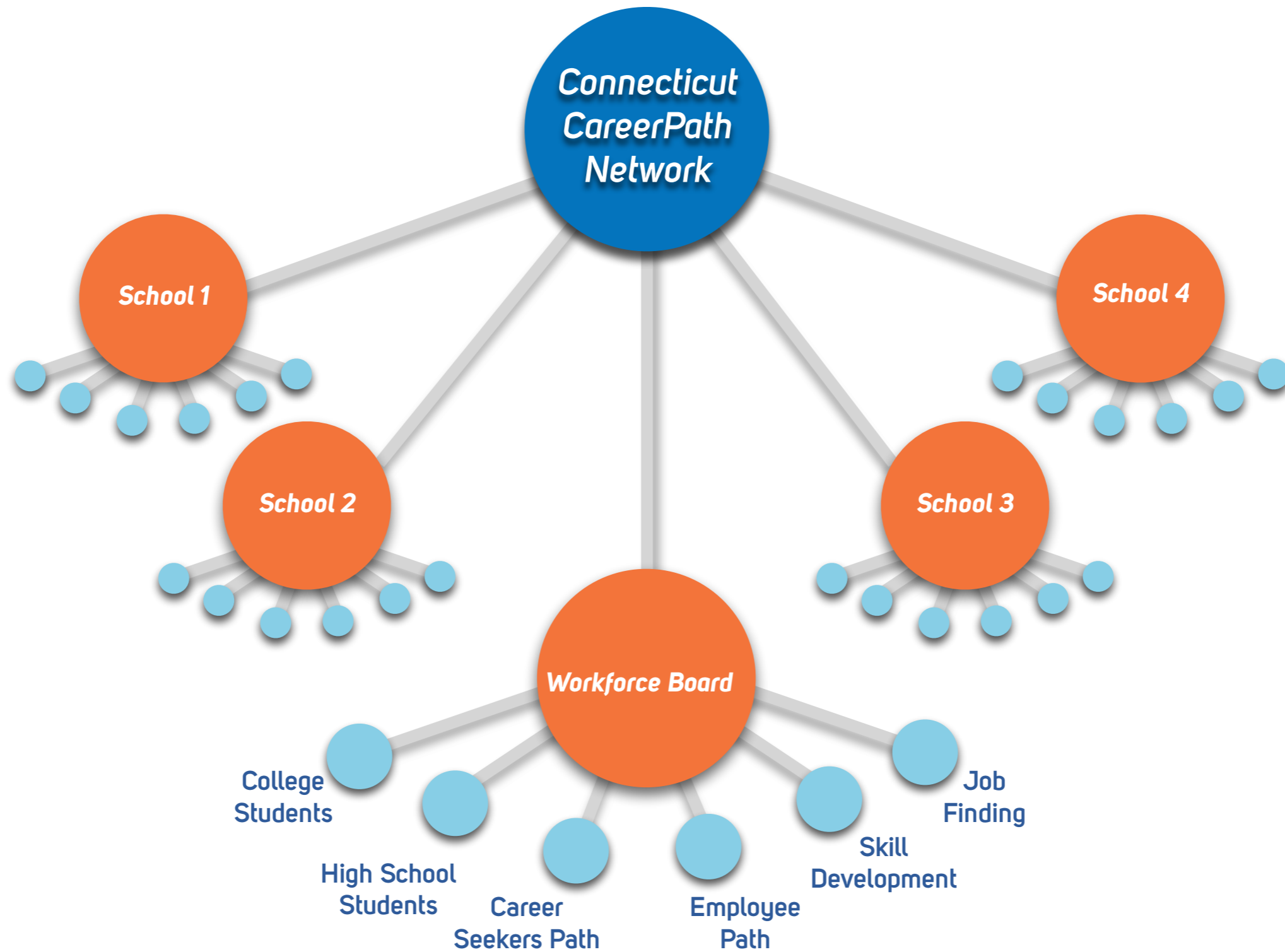
## Recruitment

### Employer Tools

- Employer Dashboard to track candidates
- Post Jobs
- Assess Talent Pipeline
- Communication tools
- Model Successfully leveraged by LinkedIn



# Enterprise Architecture Ecosystem



Engage Empower Advance: Career Pathways takes shape here!



CAREERPATH®



### *Our team can provide all the following services:*

- *Enterprise SaaS system, customized for Connecticut*
- *Hosting and system maintenance*
- *Technology support services*
- *Outreach and engagement personnel to assist in onboarding participants and running the program*
- *Content development expertise for activities and pathways*
- *Custom reporting services*
- *Technology integrations*
- *Employer outreach and adoption*





CAREERPATH®

***Thank you!***

*to get started today:*

***Rich Portelance***

Chief Executive Officer

[rich@getcareerpath.com](mailto:rich@getcareerpath.com)

203.512.2379

[www.getcareerpath.com](http://www.getcareerpath.com)

